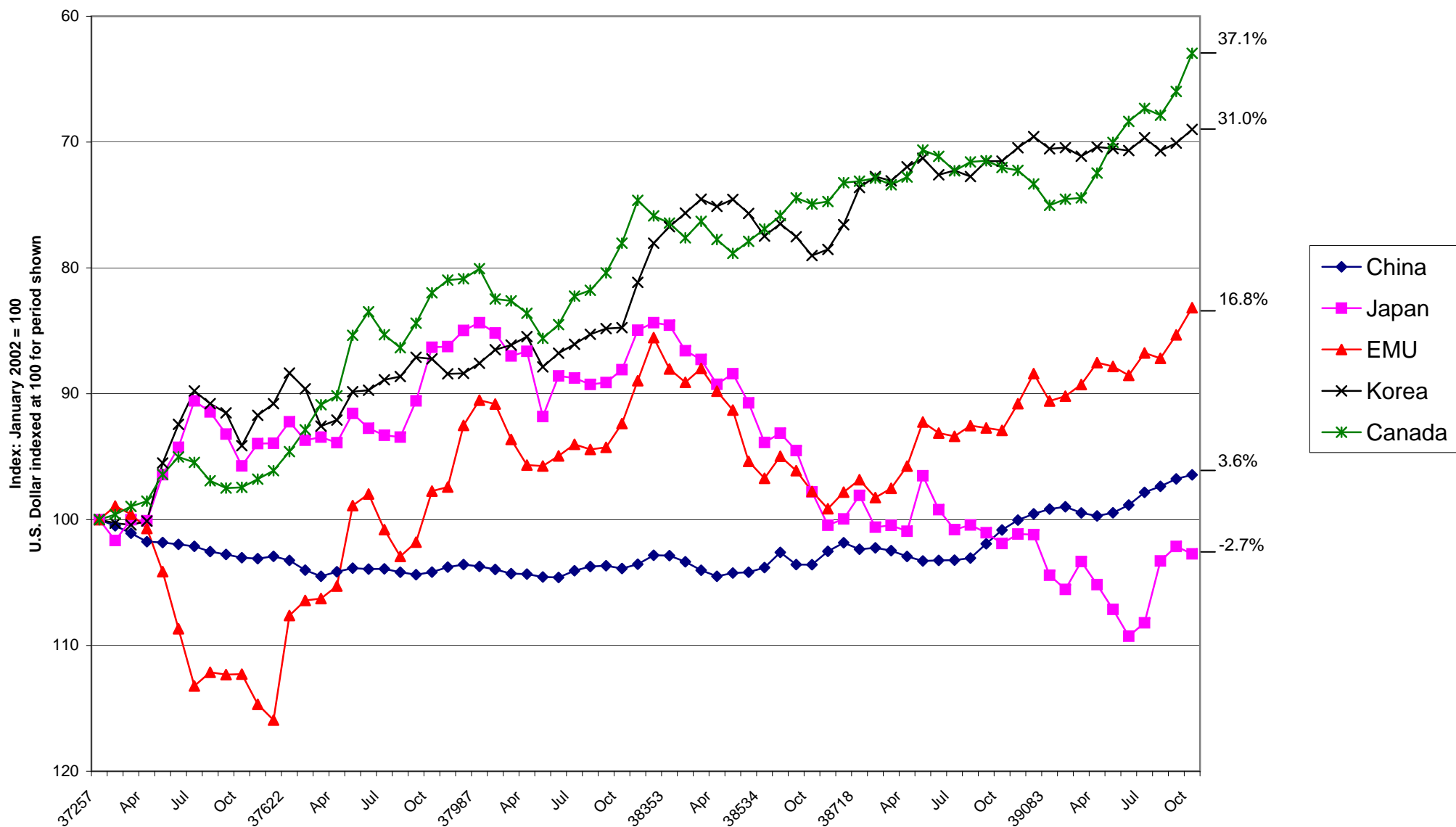


Changes in Selected World Currencies with Respect to the U.S. Dollar in Real Terms¹

January 2002 - October 2007



¹ The exchange rates are adjusted for inflation as reported in each country's consumer price index (CPI), indexed to January 2002.

CPI

CPI 2002 Index

	UNITED STATES CANADA EMU JAPAN KOREA CHINA					UNITED STATES CANADA EMU JAPAN KOREA CHINA									
	Jan-02														
Feb	102.8318584	102.3875	103.6866	98.42365	105.0206	100	100	100	100	100	100	100	100	100	100
Mar	103.2743363	103.0303	103.7788	97.93103	105.5144	99.933	100.4302926	100.6278027	100.0888889	99.4994995	100.4702194	100.6222222	99.6969997	101.0188088	99.86604489
Apr	104.4247788	104.3159	104.8848	98.42365	106.6667	99.79913464	101.5490534	101.8834081	101.1555556	100	101.5673981	101.1555556	99.6969997	101.0188088	99.86604489
May	104.4247788	104.4995	104.977	98.71921	107.0782	99.73226922	101.5490534	102.0627803	101.2444444	100.3003003	101.9592476	102.0627803	99.73226922	101.9592476	99.73226922
Jun	104.5132743	104.8669	104.977	98.62069	106.9959	99.6654486	101.6351119	102.4215247	101.2444444	100.2002002	101.8808777	102.4215247	100.2002002	101.8808777	99.6654486
Jul	104.6017699	105.4178	104.7926	98.2266	106.6667	99.59867275	101.7211704	102.9596413	101.0666667	99.7997998	101.5673981	102.9596413	99.7997998	101.5673981	99.59867275
Aug	104.9557522	105.7851	104.5161	98.52217	107.4074	99.53194164	102.0654045	103.3183857	100.8	100.1001001	102.2727273	103.3183857	100.1001001	102.2727273	99.53194164
Sep	105.1327434	105.7851	104.7926	98.52217	107.9835	99.46525524	102.2375215	103.3183857	101.0666667	100.1001001	102.8213166	103.3183857	100.1001001	102.8213166	99.46525524
Oct	105.3097345	106.1524	105.0691	98.32512	107.6543	99.39861352	102.4096386	103.677113	101.3333333	99.8998999	102.507837	103.677113	99.8998999	102.507837	99.39861352
Nov	105.3097345	106.4279	104.977	98.32512	107.8189	99.33201645	102.4096386	103.9461883	101.2444444	99.8998999	102.6645768	103.9461883	99.8998999	102.6645768	99.33201645
Dec	105.0442478	106.0606	105.4378	98.32512	108.3128	99.26546399	102.151463	103.5874439	101.6888889	99.8998999	103.1347962	103.5874439	99.8998999	103.1347962	99.26546399
Jan-03	105.4867257	106.9789	105.3456	98.02956	108.9712	100.4	102.5817556	104.4843049	101.6	99.5995996	103.7617555	104.4843049	99.5995996	103.7617555	100.4
Feb	106.3716814	107.8053	105.8065	97.73399	109.6296	100.132866	103.4423408	105.2914798	102.0444444	99.2992993	104.3887147	105.2914798	99.2992993	104.3887147	100.132866
Mar	106.9911504	108.1726	106.4516	98.02956	110.9465	100.7648393	104.0447504	105.6502242	102.6666667	99.5995996	105.6426332	105.6502242	99.5995996	105.6426332	100.7648393
Apr	106.7256637	107.438	106.5438	98.32512	110.6996	100.797126	103.7865749	104.9327354	102.7555556	99.8998999	105.4075235	103.7865749	99.8998999	105.4075235	100.797126
May	106.5486726	107.5298	106.4516	98.52217	110.535	100.4303951	103.6144578	105.0224215	102.6666667	100.1001001	105.2507837	103.6144578	100.1001001	105.2507837	100.4303951
Jun	106.7256637	107.6217	106.5438	98.2266	110.2058	99.96444495	103.7865749	105.1121076	102.7555556	99.7997998	104.9327354	103.7865749	99.7997998	104.9327354	99.96444495
Jul	106.8141593	107.7135	106.4516	98.02956	110.1235	100.0966661	103.8726334	105.2017937	102.6666667	99.5995996	104.859342	103.8726334	99.5995996	104.859342	100.0966661
Aug	107.2	107.9	106.6	98.2	110.6	100.4277291	104.2478485	105.3839462	102.8097778	99.7727727	105.3126959	104.2478485	99.7727727	105.3126959	100.4277291
Sep	107.5	108.1	107	98.3	111.6	100.559373	104.5395869	105.5792825	103.1955556	99.87437437	106.2648903	104.5395869	99.87437437	106.2648903	100.559373
Oct	107.4	107.8	107.1	98.3	111.7	101.1877886	104.4423408	105.286278	103.292	99.87437437	106.3601097	104.4423408	99.87437437	106.3601097	101.1877886
Nov	107.1	108.1	107.2	97.8	111.5	102.3119769	104.1506024	105.5792825	103.3884444	99.3663637	106.1696708	104.1506024	99.3663637	106.1696708	102.3119769
Dec	107	108.2	107.5	97.9	112	102.4419588	104.0533563	105.6769507	103.6777778	99.46796797	106.645768	104.0533563	99.46796797	106.645768	102.4419588
Jan-04	107.5	108.3	107.3	97.7	112.7	103.6128	104.5395869	105.7746188	103.4848889	99.26476476	107.3123041	103.6128	99.26476476	107.3123041	103.6128
Feb	108.1	108.5	107.5	97.7	113.2	102.2356562	105.1230637	105.9699552	103.6777778	99.26476476	107.7884013	102.2356562	99.26476476	107.7884013	102.2356562
Mar	108.8	108.9	108.2	97.9	114.3	103.7877845	105.8037866	106.3606278	104.3528889	99.46796797	108.835815	103.7877845	99.46796797	108.835815	103.7877845
Apr	109.2	109.1	108.7	97.9	114.3	104.6274168	106.1927711	106.5559641	104.8351111	99.46796797	108.835815	104.6274168	99.46796797	108.835815	104.6274168
May	109.8	110.1	109.1	96.8	114.2	104.8493325	106.7762478	107.5326457	105.2208889	98.35035035	108.7405956	106.7762478	98.35035035	108.7405956	104.8493325
Jun	110.2	110.2	109.1	98.2	114.2	104.9626672	107.1652342	107.6303139	105.2208889	99.77277277	108.7405956	104.9626672	99.77277277	108.7405956	104.9626672
Jul	110	110.1	108.9	97.9	114.9	105.4017894	106.9707401	107.5326457	103.028	99.46796797	109.4071317	105.4017894	99.46796797	109.4071317	105.4017894
Aug	110	109.9	109.1	98	115.9	105.7503988	106.9707401	107.3373094	105.2208889	99.56956957	105.7503988	105.7503988	99.56956957	105.7503988	105.7503988
Sep	110.3	110	109.3	98.3	115.9	105.7884604	107.2624785	107.4349776	105.4137778	99.87437437	110.359326	105.7884604	99.87437437	110.359326	105.7884604
Oct	110.9	110.3	109.6	98.8	115.9	105.5388635	107.8459552	107.7279821	105.7031111	100.3823824	110.359326	105.5388635	100.3823824	110.359326	105.5388635
Nov	110.9	110.7	109.5	98.6	115.2	105.1767123	107.8459552	108.1186547	106.6066667	100.1791792	109.69279	105.1767123	100.1791792	109.69279	105.1767123
Dec	110.5	110.5	110	98.1	115.4	104.9005659	107.4569707	107.9233184	106.0888889	99.67117117	109.8832288	104.9005659	99.67117117	109.8832288	104.9005659
Jan-05	110.7	110.4	109.4	97.6	116.2	105.5814432	107.651463	107.8265602	105.5102222	99.16316316	110.6449843	105.5814432	99.16316316	110.6449843	105.5814432
Feb	111.4	110.8	109.7	97.4	116.9	106.2284668	108.3321859	108.2163229	105.7995556	98.5995996	111.3115204	106.2284668	98.5995996	111.3115204	106.2284668
Mar	112.3	111.4	110.5	97.7	117.8	106.5900547	109.207401	108.8023318	106.5711111	99.26476476	112.1684953	106.5900547	99.26476476	112.1684953	106.5900547
Apr	113	111.8	111	97.9	117.9	106.5107103	109.8881239	109.1930045	107.0533333	99.46796797	112.2637147	106.5107103	99.46796797	112.2637147	106.5107103
May	112.9	111.9	111.2	98.2	117.7	106.7366205	109.7908778	109.2906726	107.2462222	99.77277277	112.0732759	106.7366205	99.77277277	112.0732759	106.7366205
Jun	113	112	111.3	97.7	117.3	106.6420699	109.8881239	109.3883408	107.3426667	99.26476476	111.6923981	106.6420699	99.26476476	111.6923981	106.6420699
Jul-05	113.473	112.301	111.238	97.6198	117.794	107.2990216	110.3480981	109.682322	107.2828711	99.18328028	112.1627821	107.2990216	99.18328028	112.1627821	107.2990216
Aug	114.053	112.721	111.516	97.7176	118.194	107.1251539	110.9121256	110.0925283	107.5509867	99.28264665	112.5436599	107.1251539	99.28264665	112.5436599	107.1251539
Sep	115.447	113.665	112.083	98.0111	118.994	106.7405566	112.2677367	111.0145157	108.0978267	99.58084735	113.3054154	106.7405566	99.58084735	113.3054154	106.7405566
Oct	115.679	113.14	112.372	98.0111	118.794	106.8053298	112.4933477	110.5017578	108.3765511	99.58084735	113.1149765	106.8053298	99.58084735	113.1149765	106.8053298
Nov	114.75	112.931	112.083	97.6198	117.994	106.5440096	111.5899312	110.2976314	108.0978267	99.18328028	112.353221	106.5440096	99.18328028	112.353221	106.5440096
Dec	114.286	112.826	112.461	97.7176	118.394	106.5789749	111.1387091	110.1950798	108.4623867	99.28264665	112.7340987	106.5789749	99.28264665	112.7340987	106.5789749
Jan-06	115.157	113.455	111.972	97.8155	119.123	107.5874906	111.9857229	110.8094126	107.9907733	99.38211461	113.4282484	107.5874906	99.38211461	113.4282484	107.5874906
Feb	115.389	113.245	112.294	97.522	119.359	107.1788524	112.2113339	110.6043094	108.3013244	99.08391391	113.6529663	107.1788524	99.08391391	113.6529663	107.1788524
Mar	116.028	113.874	112.939	97.7176	120.066	107.4427751	112.8327367	111.2186422	108.9233911	99.28264665	114.3261677	107.4427751	99.28264665	114.3261677	107.4427751
Apr	117.015	114.503	113.685	97.9133	120.184	107.7888388	113.7925559	111.8329749	109.6428667	99.48148098	114.4385266	107.7888388	99.48148098	114.4385266	107.7888388
May	117.596	115.028	113.996	98.2067	120.419	108.2309332	114.3575559	112.3457327	109.9428089	99.77958008	114.6622923	108.2309332	99.77958008	114.6622923	108.2309332
Jun	117.828	114.818	114.085	98.2067	120.184	108.2417009	114.583167	112.1406296	110.0286444	99.77958008	114.4385266	108.2417009	99.77958008	114.4385266	108.2417009
Jul	118.177	114.923	113.941	97.9133	120.655	108.3720118	114.9225559	112.2431812	109.8897644	99.48148098	114.870102	108.3720118	99.48148098	114.870102	108.3720118
Aug	118.409	115.133													